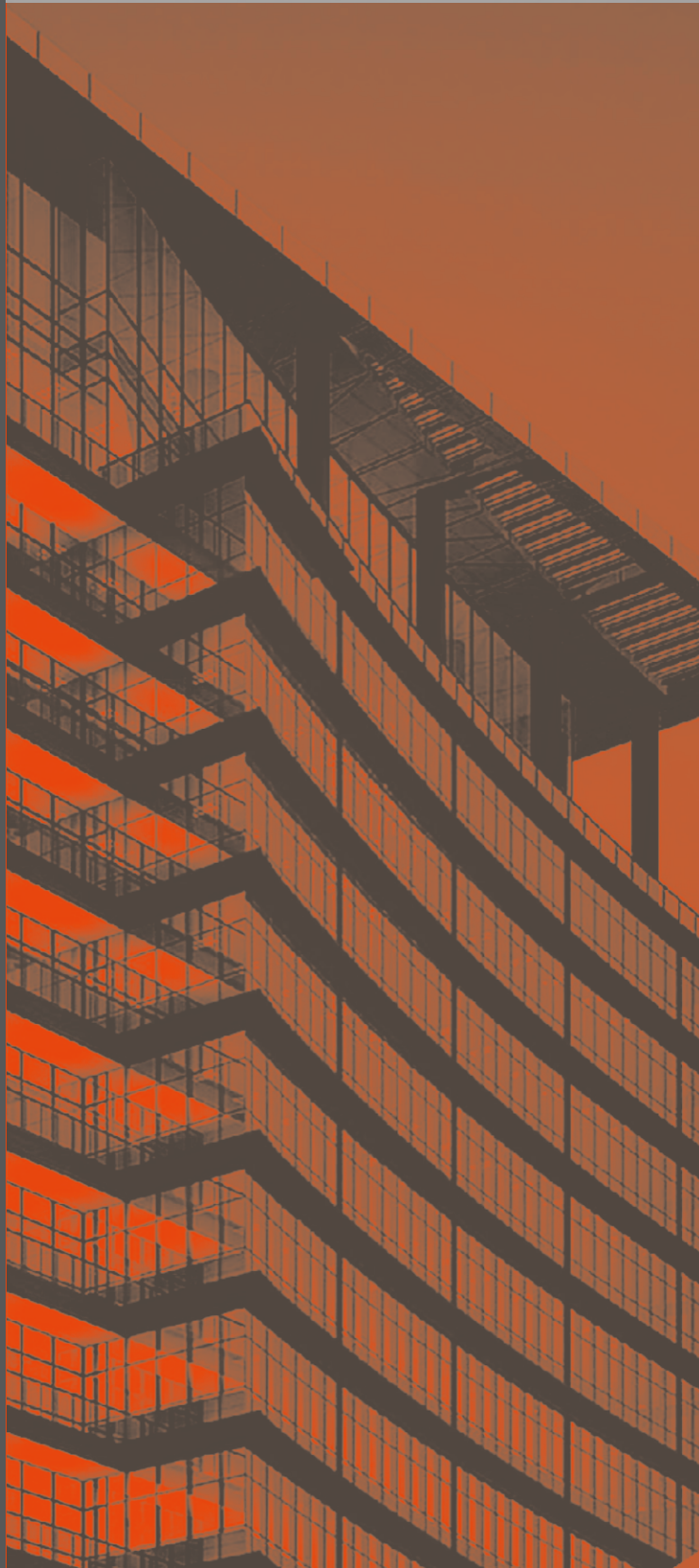


TAFE
POWER

**POWERING
THE WORLD**



Dewatering Pump
TP-SP-6x6



TAFE POWER

TAFE Power is one of the iconic brands of TAFE, which envisions Powering The World through its products such as Generators, Engines, Mobile Light Towers, Dewatering and Fire-Fighting Pumps. TAFE's 65-year rich legacy, combined with its expertise in manufacturing diesel engines for the Indian subcontinent, drives the TAFE POWER brand of products to countries in Asia, Africa, Europe, Australia and the Americas. Through its subsidiary TAFE Motors and Tractors Limited (TMTL), TAFE has been one of the pioneers in manufacturing diesel engines in India. TMTL Engines has its origin in European engineering and technology and are currently being used as a prime mover for various applications such as tractors, power generation, construction equipment, agriculture equipment, marine applications and various pumping applications, including firefighting, dewatering pumps etc.

TAFE, through TMTL, has technical collaboration with global players such as Ricardo Consulting (UK), AVL (Austria), Sisu Diesel and Valtra (Finland). As a result, TAFE POWER products have low operational expenses, high fuel efficiency and offer value for money. Furthermore, the products adhere to prescribed safety norms and can be customized based on the application and requirement.





WHY TAFE POWER?

- TAFE's manufacturing might and rich engineering expertise spanning over 65 years
- International product quality - Safe and highly customizable
- Strong base of over 1 Million satisfied users
- Market leader in India, dominant player in the telecom industry
- Strong experience in building and managing global networks and alliances in over 100 countries
- Operating on principles of TQM, TPM, SGA, Kaizen to meet global standards of quality and productivity
- Best-in-class service and after-sales support

APPLICATIONS

- Draining and dewatering
- Construction Quarries/tunnels
- Heavy sludge & slurry
- Mines and tunnel dewatering
- Flood water dewatering
- Solid laden liquid
- Ground excavation
- Sewage / pipelines draining
- Marine / saline water
- Storm water runoff

HIGHLIGHTS

- International technology
- Low cost of ownership
- Long service interval
- Low cost of spare parts
- High fuel efficiency
- Rugged build quality
- Unmatched reliability
- Easy to maintain
- Customizable to the requirement

OUR LEGACY

Tractors and Farm Equipment Limited, headquartered in Chennai, India, is an internationally reputed organization in the global agriculture machinery business, with an annual turnover of over US \$1.5 billion. The world's third-largest tractor manufacturer by volumes and among the leading exporters of tractors from India, TAFE has been powering farms, hospitals, schools, infrastructure projects, and small and large business organizations with its wide range of products and services.

A global tractor major, a multi-brand multi-business conglomerate, TAFE has diversified business interests through its subsidiaries into farm machinery, diesel engines and generators, agriculture engines, engineering plastics, gears and transmission components, batteries, hydraulic pumps and cylinders, vehicle franchise and plantations. Driven by a leadership with purpose and vision, TAFE has earned customers' trust through its range of products widely acclaimed for their high quality and low cost of operation. In addition, a robust global distribution network effectively backs TAFE's promise of industry-best service and support.

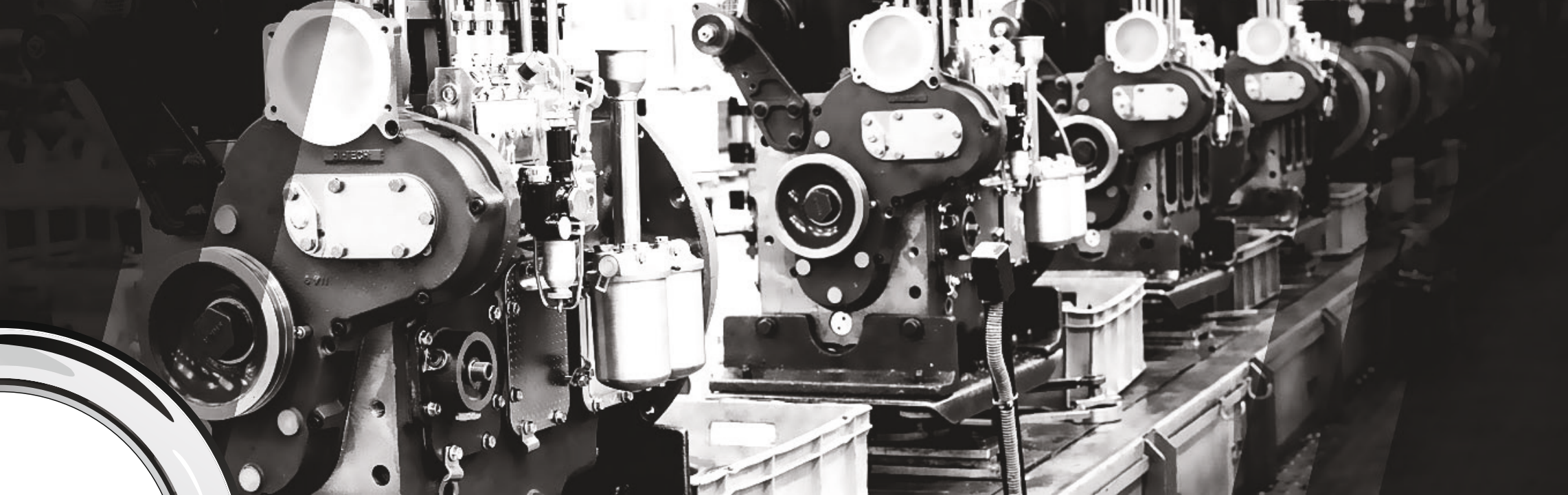
TAFE has been awarded the Engineering Export Promotion Council's (EEPC) Star Performer Award for outstanding contribution to Engineering Exports, Large Enterprise Category, for 21 consecutive years. TAFE is committed to the Total Quality Management (TQM). Recently, various manufacturing plants of TAFE have garnered numerous 'TPM Excellence Awards' from the Japan Institute of Plant Maintenance (JIPM) and several other regional awards for TPM excellence. In addition, TAFE became the first Indian tractor manufacturer to win the Frost & Sullivan Global Manufacturing Leadership Award in 2018, being recognized with the 'Enterprise Integration and Technology Leadership Award' and two 'Supply Chain Leadership Awards'. Furthermore, TAFE's plants are certified under ISO 9001 for efficient quality management systems, ISO 14001 for environment-friendly operations and ISO 45001 for occupational health and safety.

In 2005, TAFE acquired the legendary tractors, gears, transmissions and engines business from Eicher Motors Limited, widely popular for its original European Technology, to form TAFE Motors and Tractors Limited (TMTL), a wholly owned subsidiary of TAFE.

TMTL is a pioneer in manufacturing both air-cooled and liquid-cooled diesel engines in India, with a heritage of more than 60 years and manufactures specially designed engines for stationary and automotive applications. It has a strong presence in the retail, agriculture, telecom and industrial segments. Known for quality, technology and reliability, generators and engines from TMTL are eco-friendly with low emission levels, a low carbon footprint and offer higher value for money.

TMTL has an existing base of over 1 Million delighted customers. With over 700% volume growth in the last decade, it is one of India's fastest-growing engine manufacturing companies with a dominant market share in the telecom segment.

TMTL has won numerous awards in recent years, such as – The Most Admired Company of the Year (2021) by the World Leadership Congress and Awards, Outstanding Diesel Generators Brand of the Year (2019) by EPC World Media Group, India's Most Promising Brand (2017) by WCRC, Silver Award (2013) by Indus Towers for Excellence in Infra Equipment, etc. to name a few. With an emphasis on meeting global quality and productivity standards, TMTL employs quality management tools such as TQM, TPM, SGA, and Kaizen extensively.



DE-WATERING PUMP

Known for quality, technology and reliability, TAFE POWER De-watering pump have low operational expenses, high fuel efficiency and offer superior value for money. They are safe, highly customizable and can be built based on the application and customer requirements. TMTL is one of the fastest growing businesses in the Indian industry.



*Product images and illustrations are for representation purposes only.
Actual product colors and specifications may vary.

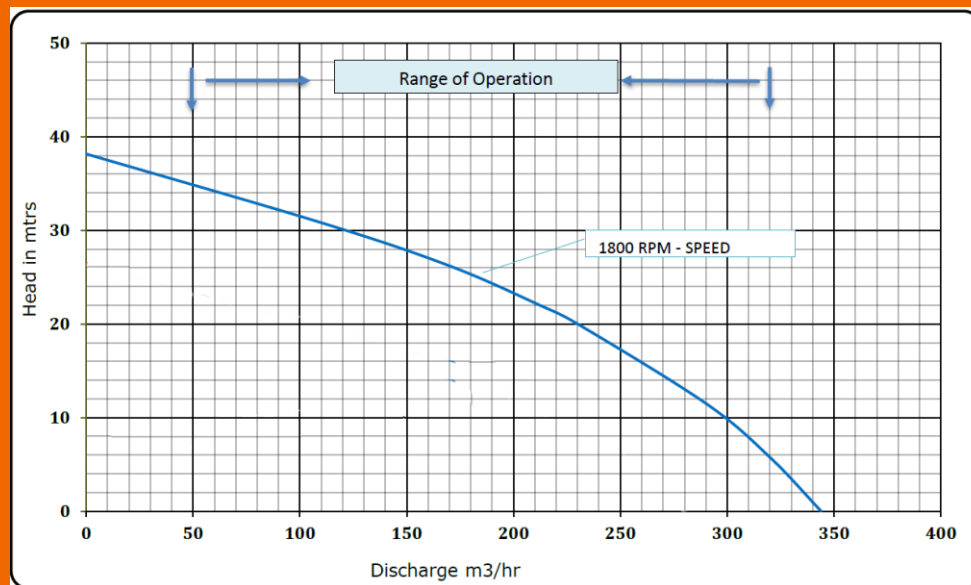
FEATURES

Rugged, heavy-duty centrifugal pumps engineered specifically for portable application. Available with vacuum pump priming system - Features a high capacity vacuum pump that evacuates air from the pump casing and suction line. For creation of higher negative suction lift.

- Replaceable wear parts including wear rings and shaft sleeves
- Dynamically-balanced impellers
- Oversized bearings with min. 20,000-hour life
- Heavy walled castings for durability
- Low shaft deflection
- No seal flush needed
- Fully guarded coupling

PERFORMANCE CURVE

Model : TP-SP 6x6 Size : 6" x 6" RPM : 1800



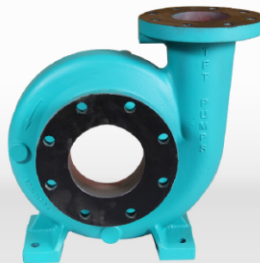
LIST OF SPARE PARTS FOR DEWATERING PUMP



Bearing



Bearing Housing



Casing



Hoses



Impeller



Double Mechanical Seal



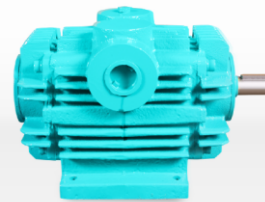
Tyres for Coupling



Couplings



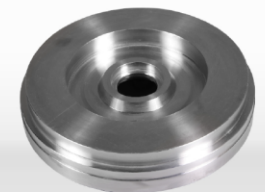
Float



Vacuum Pump



Shaft



Stuffing Box

TECHNICAL SPECIFICATIONS

PARAMETERS	UNIT	DETAILS
Pump Set Model		TP-SP 6x6
Make of Pump Set		TAFE POWER
PUMP SPECIFICATIONS		
Suction Pipe Connection	Inch (mm)	6" (150)
Discharge Pipe Connection	Inch (mm)	6" (150)
Maximum Discharge (Q)	m ³ /hr	320
Total Head	m	34
Suction Lift (H)	m	8
Type of Vacuum Pump		Auto Prime Vacuum Pump
Vacuum Pump capacity	CFM	70
Volute Casing Material		CI (IS210, FG260)
Impeller material		CF-8
Pump Shaft & Sleeve		SS-304
Shaft Sealing		Double Side Mechanical with Oil Bath
Type of Impeller		Semi-open
Solid Handling Size	mm	85 mm (max) with Semi-open impeller
PROTECTION & SAFETIES		
Control Panel IP Code		54
Controller		Deep Sea (E100)
Protections		Emergency Stop PB

Note: Flange details as per DIN 1092-1 / ISO 7005 PN 10

PARAMETERS	UNIT	DETAILS
ENGINE SPECIFICATIONS:		
Engine Model		421 ES IND DWA
Engine Power	HP	43
Rated speed	RPM	1800
No. of Cylinders	Nos.	3
Aspiration		Naturally Aspirated
Cooling		Air Cooled
FIP		BOSCH, Inline
Battery Charging Alternator		13.6 ~ 14.2V, 21.2 Amp
Fuel Filter	Nos.& Type	Dual Bowl Replaceable Element Type
Lube Oil Filter	Nos.& Type	One Spin-on Type
Lube Oil Sump Capacity	Lt	9.5 Lt with Filter
Starting		Electric, 12 V DC
OTHER DETAILS:		
Dimensions: LxWxH (approx.) w/o silencer	mm	2000x980x1585 *
Dimensions: LxWxH (approx.) with silencer	mm	2000x980x1845 *
Tyre Type		Solid Rubber, Dia:16", Tread:4"
Total Dry Weight (approx.)	Kg	1250

* Width without wheel and axle.